

# *The universal cardio pulmonary exercise testing system*



## *Ergostik™*

*The Ergostik delivers reliable results for a wide range of performance*

- › *Light-weight flow sensor*
- › *Flexible screen presentations*
- › *Intelligent determination of threshold*



**Geratherm®**  
Respiratory

Spirometry

CPET

PFT

# Ease of use with full flexibility – the cardio pulmonary exercise testing system for each application

# Ergostik™



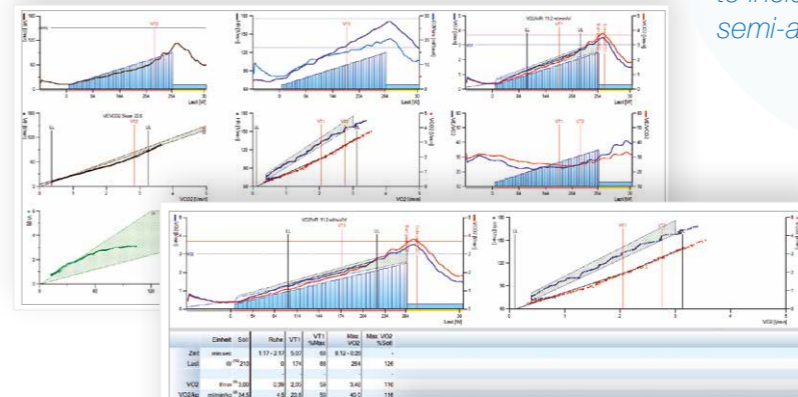
### Light-weight flow sensor

The low weight and the low dead space of the flow sensor are particularly comfortable for the patient.



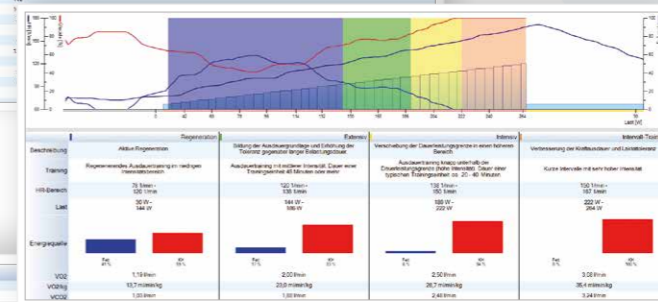
### Flexible screen presentations

The screen display and the report can be configured individually to include graphs, tables and semi-automated diagnosis text.



### Intelligent determination of threshold

By combining different models, the software reliably detects all thresholds.



### State-of-the-art software for pulmonary function diagnostic

Blue Cherry™ uses a powerful SQL database to store data. This allows Ergostik™ to either be optimally integrated in a complex network environment or to be used as a single-user solution cardio pulmonary exercise testing system.

- Easy installation
- Clear and well layed out screen presentation
- Easy and flexibly upgradable
- GDT and HL7 interfaces
- Networkable
- Powerful SQL database for secure data management and statistical evaluations
- WYSIWYG report generator



### Basal metabolism

The basal metabolic rate of the patient can reliably be measured using the option REE.



### Ambient conditions

All ambient influences can be compensated using the options Ambistik and CO2stik.



### Training planner

Using the optional training module, individual training plans can be generated for the patient.

# Geratherm® Respiratory

## Technical data

Tests	
Standard	CPET, Spirometry, Flow-volume, MVV
Optional	REE, breathing pattern analysis, N2 washout, broncho provocation
Test electronic	
Dimensions	210 mm x 175 mm x 75 mm (L x W x H)
PC interface	USB 2.0
Power supply	100 - 240 V / 50 - 60 Hz / 60 VA
Sampling rate	125 Hz
Software	Blue Cherry (requires Windows XP SP2 or newer version)
Flow sensor	
Principle	Differential pressure (Ergoflow)
Range	± 16 L/s
Accuracy	± 3 % or 50 mL/s, all ATS/ERS specifications
Dead space	< 32 mL
Resistance	< 0.12 kPa/(L/s) < 14 L/s
O2	
Principle	Electrochemical cell
Range	1 - 100 %
Accuracy	± 0.1 vol% (13 % - 21 %) / ± 1 % FS
t10-90	< 90 ms (after filtering)
CO2	
Principle	Infrared spectroscopy
Range	0 - 13 %
Accuracy	± 0.1 vol% (2.5 % - 7.5 %)
t10-90	< 90 ms (after filtering)

Geratherm Respiratory GmbH is a subsidiary of Geratherm Medical AG.  
 All products of Geratherm Respiratory GmbH meet ATS/ERS criteria  
 and other applicable international standards and guidelines.  
 Geratherm Respiratory GmbH is certified according  
 to DIN EN ISO 13485.

## Accessories

### Ergoflow

Item code  
10.600



### CO2stik

Item code  
40.448



### REE with Canopy

Item code  
40.115



CE  
0494

Your Geratherm Respiratory partner:

Further information:

