



Brio X series Patient Monitor

See **more**, Decide **better**

Brio X
70/50/30



Brio X30

Brio X70

Brio X50

Explore

Quick, easy, yet versatile for trustworthy and effective care

bionet
www.ebionet.com



Scan for more detail

■ Brio X70/50/30 Patient Monitor

Optimized simplicity to empower your workflow

From EMS to ICU, Brio X series contain the most demanded features of daily clinical workflows
With a wide range of parameters, comprehend the patient status quicker, and make your decisions better

Advanced Scoring System

- Early Warning Score (EWS)
- Glasgow Coma Scale (GCS)

Enhanced Cardiac Monitoring

- 12CH Resting ECG algorithm
- Bionet patented ST Map

Neurology Monitoring

- EEG Level Monitoring
- NMT Monitoring

Anesthesia Monitoring

- Multi-gas analyzer with O₂, N₂O monitoring
- ICG Non-invasive hemodynamic monitoring

Modular Upgradability

- Paramount : Pre-configurable external ICU module box
- External printer module

Intuitive & Easy Interface

- One layer menu structure with short-cut buttons
- Snap-shot with 16 sec full disclosure



■ Optimized for urgent situations

Brio X series have a simple yet robust design with user-friendly interfaces for operations under significant pressure

Versatile applications, from EMS to High Acuity Units

- Compatible external modules & accessories across Brio X series
- Choose from simple & easy numeric view to full graphical display with parameter waveform display select menu

High Resolution Touch Display

- Capacitive touchscreen with additional trim knob
- Bright backlit LCD with high resolution display
 - Brio X70 : 15.6" (1,366 × 768)
 - Brio X50 : 12.1" (1,280 × 800)
 - Brio X30 : 8" (1,024 × 600)

Ergonomic and robust design

- Easy battery insertion with optional battery expansion
- IPX2 test approved through shock and vibration test

ICU monitoring with easy mounting module

- ETCO₂ (All models)
- ICG Non-invasive hemodynamic monitoring
- Multi-gas analyzer
- Anesthesia monitoring with NMT, EEG

■ Early risk management with EWS, GCS

Brio X series offers 5 types of EWS (Early Warning Score) and GCS (Glasgow Coma Scale)
With scoring system of Brio X series, it is now easier and faster to assign the right treatment

EWS (Early Warning Score)

- Physiological scoring system



- Supporting protocols : NEWS, MEWS, PEWS, MEOWS, TEWS
- 4 Color indications by total score
 - Green : Normal
 - Yellow/Orange : Potential risk
 - Red : Critical

GCS (Glasgow Coma Scale)

- Practical method to assess one's consciousness based on the response of eye, verbal, and motor movement towards a stimuli



- 3 Color indications by total score

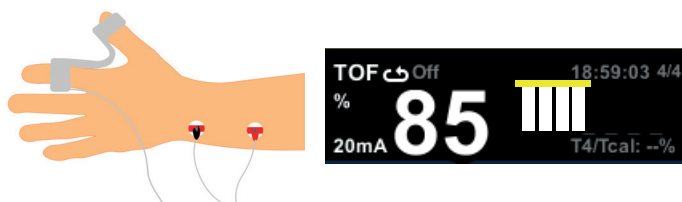
3~8	9~12	13~15
Severe	Moderate	Mild

■ Monitor anesthesia level with NMT & EEG

The continuous monitoring of anesthesia during procedures are vital for the safe recovery of patients

NMT (Neuromuscular transmission monitoring)

- Monitoring the transfer of the impulse between nerves and muscles in neuromuscular junctions



Stimulation mode

- TOF : Train of Four
- ST : Single Twitch
- PTC : Post Tetanic Count
- DBS : Double Burst Stimulation
- TET : Tetanus

0~75	75	80	90	100
Four Twitches	Three Twitches	Two Twitches	One Twitch	Twitch Absent

qCON

- Depth of anesthesia and nociception monitoring by EEG



Advantages

- Accurate dosage of hypnotics and analgesics
- Reduced opioid dosage prescribed by post-anesthesia care unit

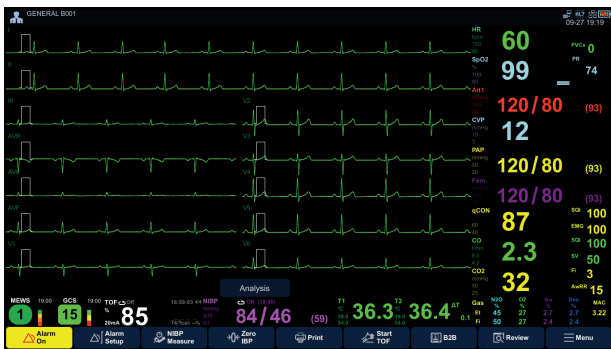
99	80	60~40	0
Awake	Sadation	General Anesthesia	Deep Anesthesia

Advanced cardiac monitoring & Interpretation

12CH diagnostic ECG and Bionet patented ST Map provide a reliable, accurate ECG diagnosis references under any circumstances

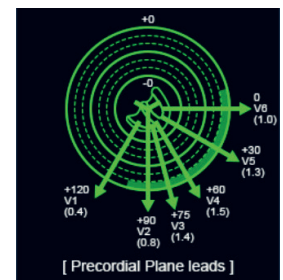
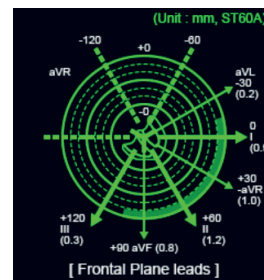
12CH ECG at a glance

- Easily readable 12CH ECG and straight forward data combined with physiological will help caregivers to see more detail
- Comprehend patient cardiac status in no time



Bionet patented ST Map

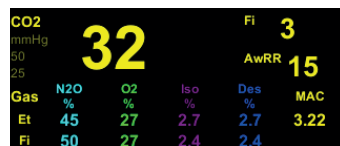
- Visual information of ST Map deviation and spatial orientation
- Intuitive and easy to understand each clinical location of subendocardial ischemia and transmural injury
- More frequent, quick, and accurate monitoring to enhance medical treatment for cases of myocardial ischemia



Advanced anesthesia monitoring

For patient's post-op recovery, Brio X series offer comprehensive parameters for ICU application, with non-invasive solution for hemodynamic monitoring and effective anesthesia gas monitoring

Platinum Multi-gas Analysis



Most used, most reliable Multi-gas Analysis

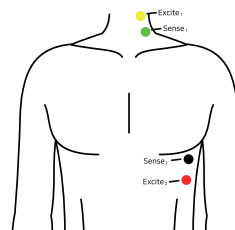
- Side-stream method detection system
- Multi-gas parameters

CO2, N2O, O2, ISO, EVO, ENF, HAL, SEV

- MAC (Minimum Alveolar Concentration) indication
- Multi-gas shuts down auto-pump for water-protection
- Auto ID & Auto Gas detection mode

ICG (Impedance cardiography)

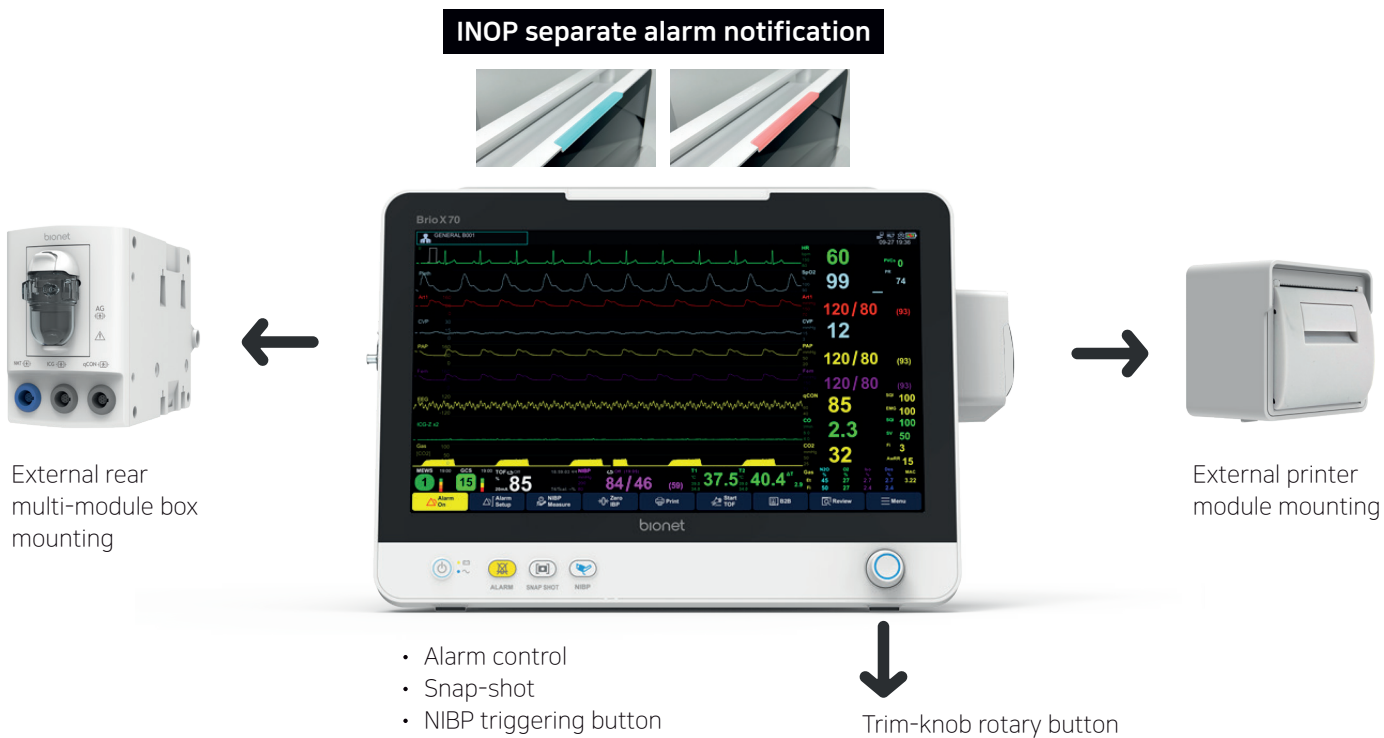
- Non-invasive hemodynamic monitoring



Safe, cost effective, reliable and easy operation

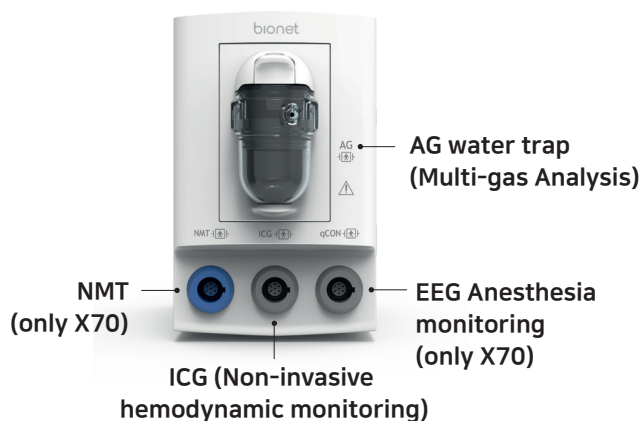
- ICG Parameters : **CO (HR × SV), SV, HR, SQI**
- Safe cardiac output calculation by non-invasive method
- Optimization of the dosing of hypnotics and analgesics

■ **Intuitive, user-friendly, modular upgrade**



■ **Paramount module box with easy mounting & plug-In design**

* Paramount module box is compatible with Brio X70/50 patient monitors



Flexible monitoring with external mounting modules

The Paramount module box is suited for covering from low to high acuity application with pre-configured 4 modules for future capacity
One Paramount module is compatible across Brio X70/50 patient monitors with its easy plug-in design

Pre-configured module available up to 4 selections among AG, NMT, ICG, EEG anesthesia monitoring

- Side-stream reusable water trap for single patient use
- DRYLINE Semi-disposable water trap
- Simply-drained, extractable design
- Auto-pump shut down system to protect circuit from moisture
- Easy mounting design compatible with Brio X70/50 patient monitors



■ See wide, act fast with network solution & BM Central

BM Central monitoring system & Network mode



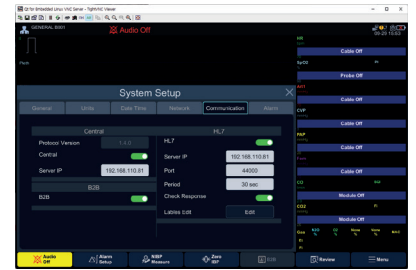
- Dual wide screen that covers 32 patients at one site
- Profile Remote alarm control & data viewer access with client mode
- Easy charting directly to EMR with HL7 data output
- Comprehensive data trend from admin to discharge in 10 days
- Convenient NIBP Start/Stop command with STAT On/Off
- Bed to Bed monitoring access across all Brio X series



Central Monitoring :
4-bed & 1-bed enlarge Display



Central Monitoring :
6-bed Display



HL7 Setting Display

■ Easy profile management & cyber security

Easy profile transfer via USB



Conveniently transfer your profile and settings to other devices via USB and save time from installation

- Devices settings
- Alarm settings
- User profile settings
- Trend settings

* It is recommended to use USB memory after anti-virus scanning
* Network settings are not included due to cyber security measurement

HIPAA Compliant & cyber security protected



Brio's data architecture is designed to meet the requirements for HIPAA compliance as well as cyber security measurements to encrypt and protect patient data

- Encrypted network data transfer
- Different ID, password, roles and authority bey user
- Auto standby shuts down when not in use
- Hidden patient name and hospital information
- Event log information

■ **Robust design with user-friendly usability**



“One Touch” design for easy pole, rollstand and wall mounting



Easy-Release battery pack



IPX2 rated

■ **Brio X70/50/30 line up**

From low to high acuity, choose the Brio X monitor that best suits your workflow



Model Configuration

	Screen	ECG		SpO2		NIBP		Temp *	IBP *	ETCO2 *	Printer	Muti-gas analyzer	Non-invasive CO	NMT	EEG Anesthesia Monitoring	EWS /GCS
		7CH	12CH	Bionet	Nellcor OxiMax	Bionet	Suntech									
Brio X70	15.6"	●	●	●	●	●	●	Continuous 2CH	4CH	●	●	●	●	●	●	●
Brio X50	12.1"	●	●	●	●	●	●	Continuous 2CH	4CH	●	●	●	●	N/A	N/A	●
Brio X30	8"	●	N/A	●	●	●	●	Continuous 2CH	2CH	●	●	N/A	N/A	N/A	N/A	●

● Standard ● Option * N/A : Not Available

* Temp/IBP/ETCO2 : Cables and sensors are optional items

bionet

See **more**, Decide **better**



Headquarters Bionet Co., Ltd.

5F, Dream Markone 61 Digital-ro 3gil, Guro-gu, Seoul, KOREA 08375
TEL. +82 2 6292 6410 E-Mail. info.sales@ebionet.com

2022.10-Bionet(Brio X Catalogue)-RI